

MJB 200 MA4

Project: _____

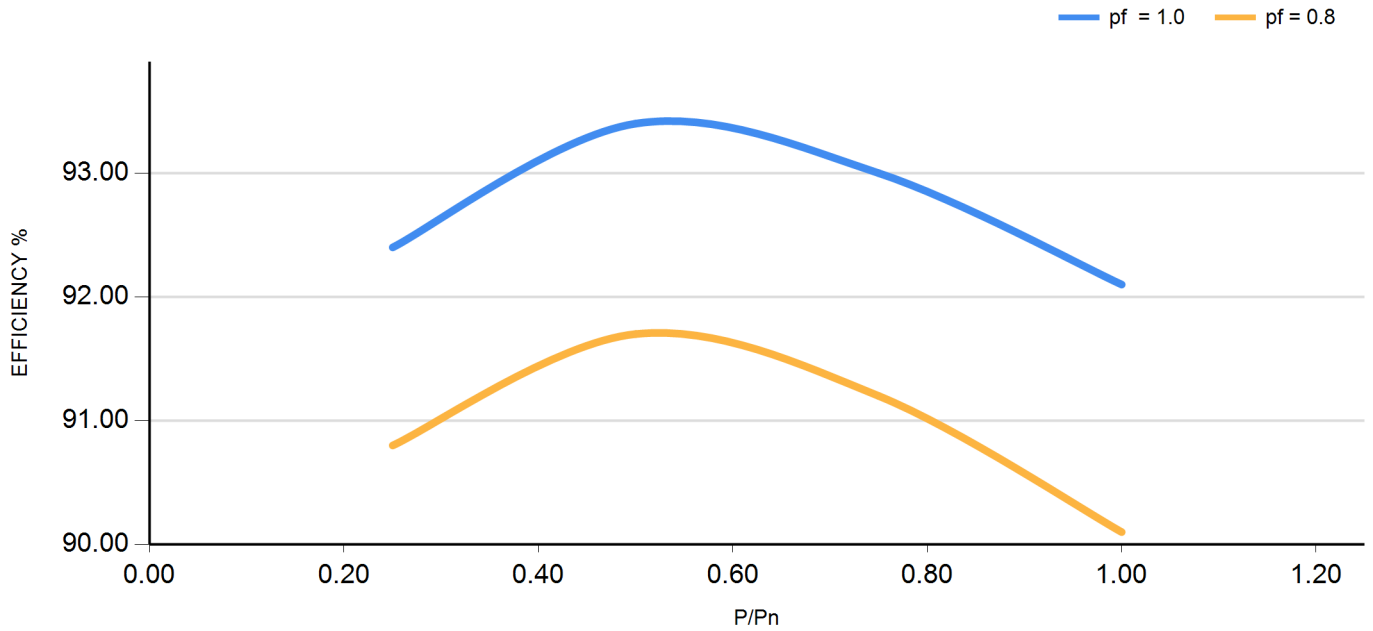
Reference: _____

CLASSE DI SOVRATEMPERATURA - TEMPERATURE RISE CLASS	H		
CLASSE DI ISOLAMENTO - INSULATION CLASS	H		
PASSO DI AVVOLGIMENTO - WINDING PITCH	2/3		
FORMA COSTRUTTIVA - MOUNTING	B20		
TEMPERATURA AMBIENTE (°C) - AMBIENT TEMPERATURE (°C)	40		
ALTITUDINE (m s.l.m) - ALTITUDE (m a.s.l.)	1000		
SISTEMA DI RAFFREDDAMENTO - COOLING SYSTEM / PROTEZIONE - PROTECTION DEGREE	IC01 / IP23		
FATTORE DI POTENZA - POWER FACTOR	0.80		
NUMERO DI POLI - NUMBER OF POLES	4		
VELOCITA' NOMINALE (r.p.m.) - RATED SPEED (r.p.m.)	1500		
SOVRAVELOCITA' (r.p.m.) - OVERSPEED (r.p.m.)	2250		
NUMERO DI TERMINALI - NUMBER OF TERMINALS	12		
PESO (kg) - WEIGHT (kg)	Approx. 264		
MOMENTO D'INERZIA (J) (kg*m ²) - INERTIA (J) (kg*m ²)	Approx. 0.36		
TEMPERATURA ACQUA RAFFREDDAMENTO (°C) - COOLING WATER TEMPERATURE (°C)			
PORTATA D'ACQUA (m ³ /h) - WATER FLOW RATE (m ³ /h)			
CADUTA DI PRESSIONE (kPa) - PRESSURE DROP (kPa)			
AUMENTO TEMPERATURA ACQUA (°C) - WATER TEMPERATURE INCREASE (°C)			
TA DI CENTRO STELLA - NEUTRAL POINT CURRENT TRANSFORMER			
CUSCINETTI - BEARINGS			
FREQUENZA - FREQUENCY	Hz	50	
TENSIONE - VOLTAGE	V	400	
CORRENTE NOMINALE - RATED CURRENT	A	89.5	
POTENZA - RATING	kVA	62	
RENDIMENTO - EFFICIENCY - (%)	4/4	92.1	
P.F.= 1.0	3/4	93.0	
	2/4	93.4	
RENDIMENTO - EFFICIENCY - (%)	4/4	90.1	
P.F.= 0.8	3/4	91.2	
	2/4	91.7	
Rapporto di corto circuito - short circuit ratio	SCR	0.37	
reattanza - reactance (%)	sincrona diretta - synchronous direct axis	X _{d uns}	358
	sincrona in quadratura - synchr. quadrature axis	X _{q uns}	199
	transitoria diretta - transient direct axis	X' _{d sat}	31.1
	transitoria in quadratura - transient quadrature axis	X' _{q uns}	199
	subtransitoria diretta - subtransient direct axis	X'' _{d sat}	12.5
	subtransitoria in quad. - subtransient quadr. axis	X'' _{q sat}	16.4
	di sequenza negativa - negative sequence	X _{2 sat}	14.5
	di sequenza zero - zero sequence	X _{0 sat}	3.1
costanti di tempo - time constants (s)	a vuoto - open circuit	T' _{do}	0.700
	transitoria - transient	T' _d	0.060
	subtransitoria - subtransient	T'' _d	0.010
	unidirezionale - armature	T _a	0.007
Coppia di corto circuito bifase - Phase to Phase short circuit torque	kN*m	4.7	
Coppia di corto circuito trifase - Three phase short circuit torque	kN*m	3.2	

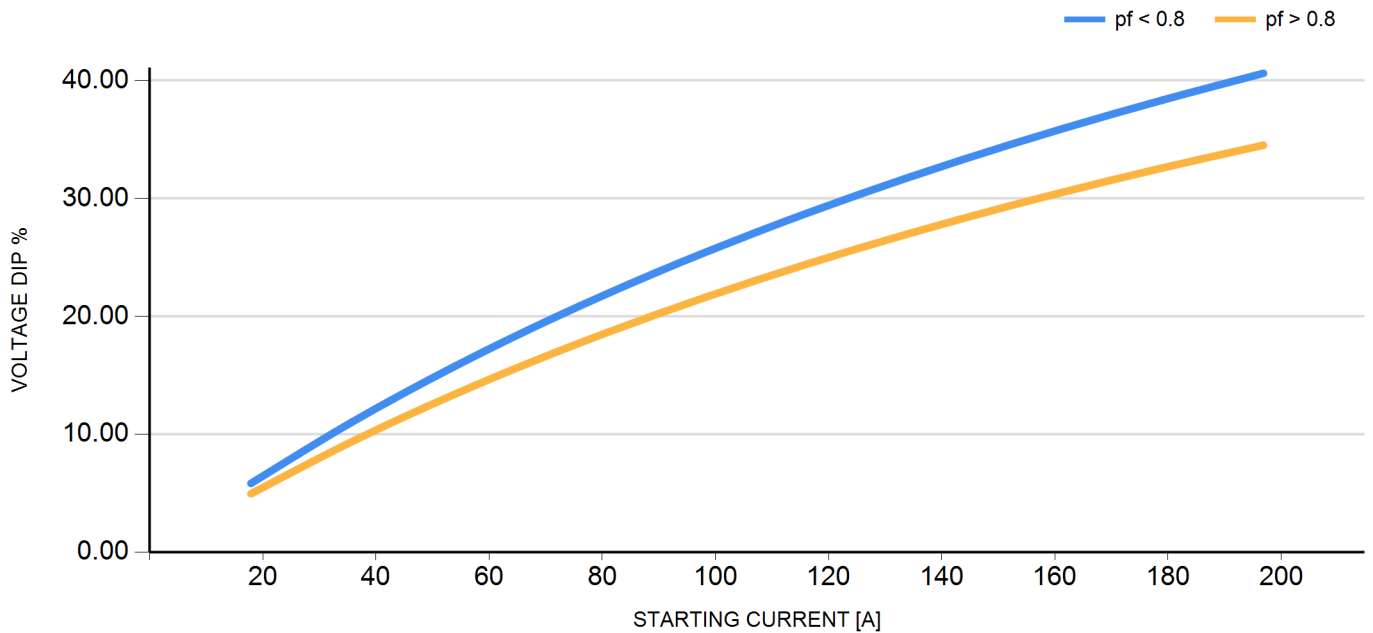
MJB 200 MA4

Project: _____
Reference: _____

CURVA DI RENDIMENTO - EFFICIENCY CURVE



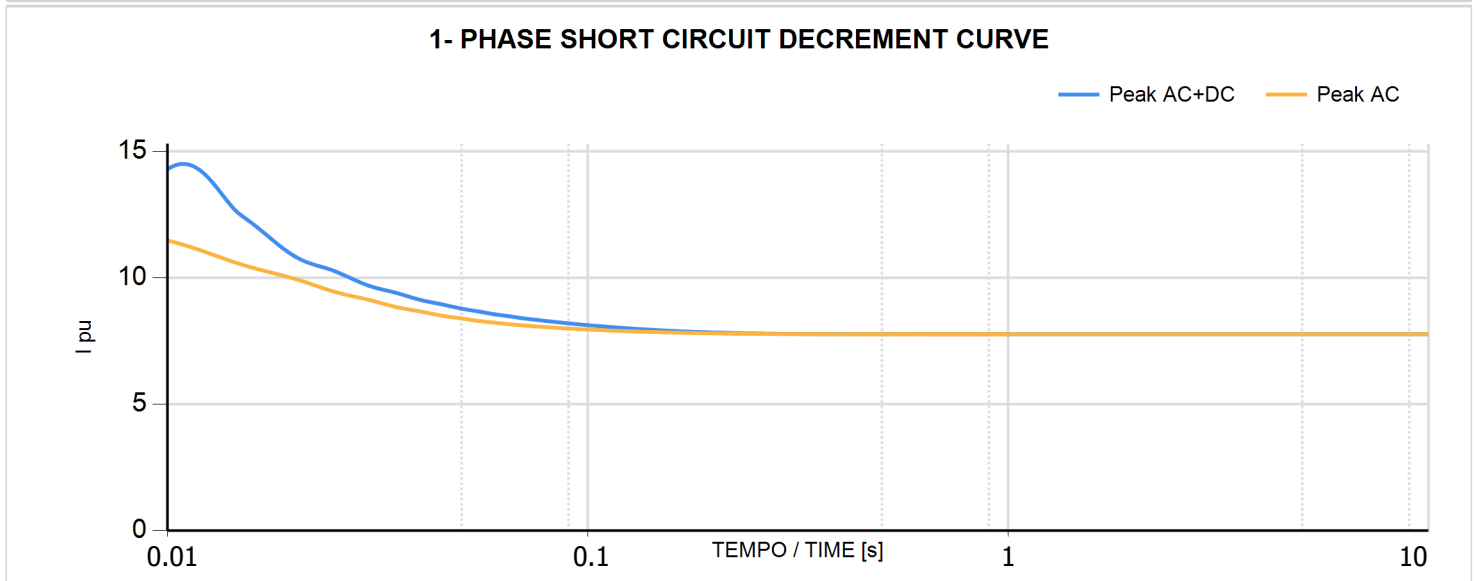
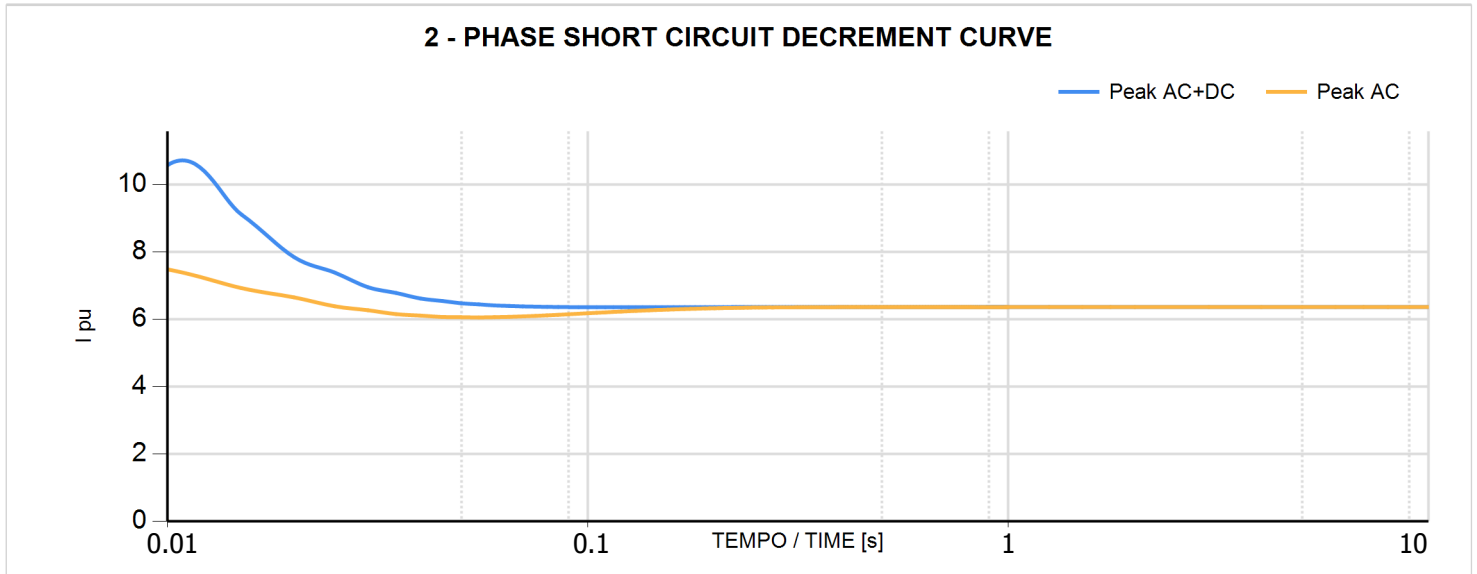
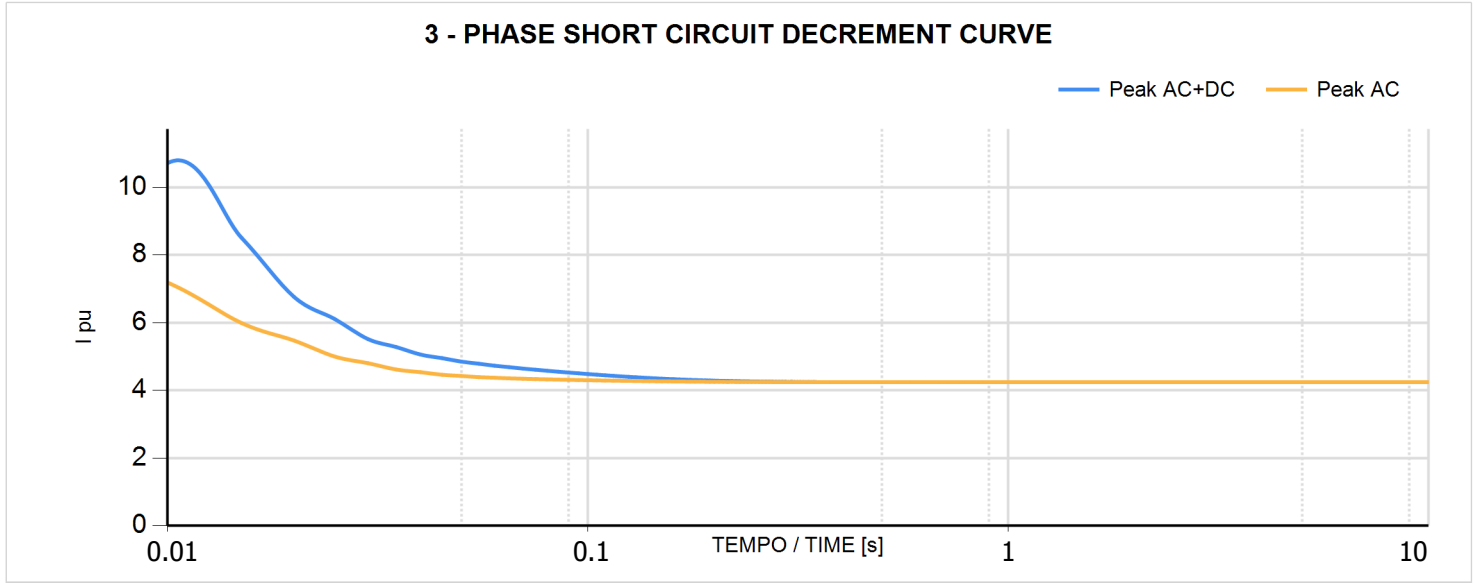
CADUTA DI TENSIONE - VOLTAGE DIP



Project: _____

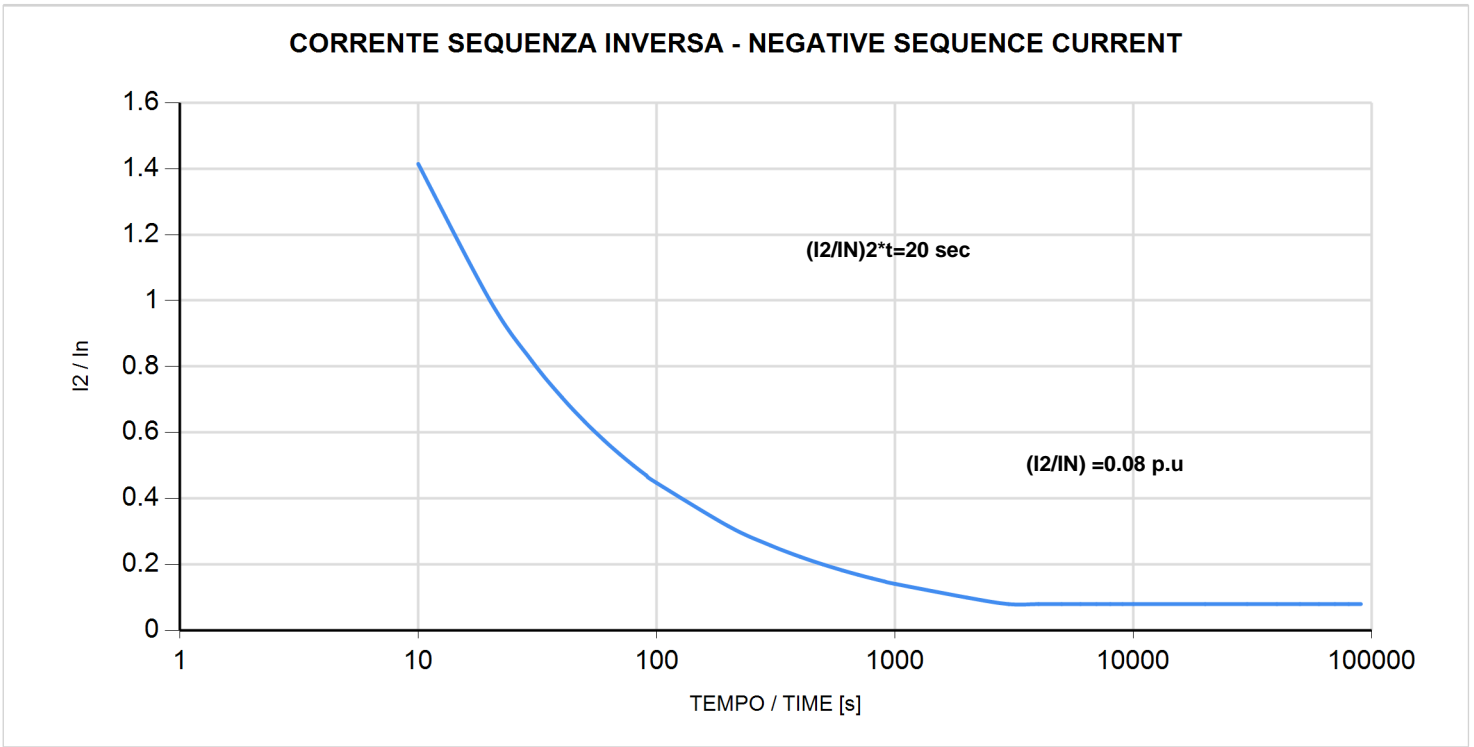
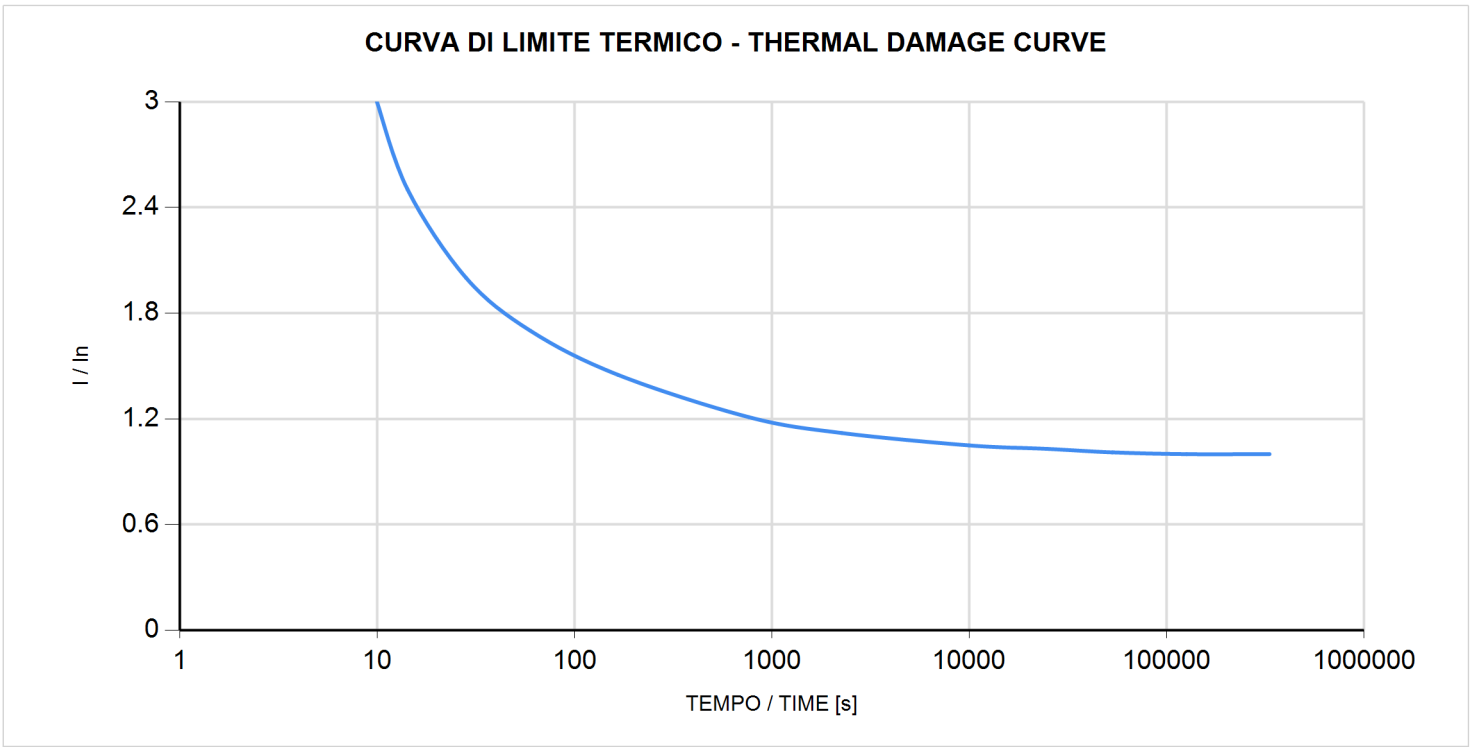
Reference: _____

MJB 200 MA4



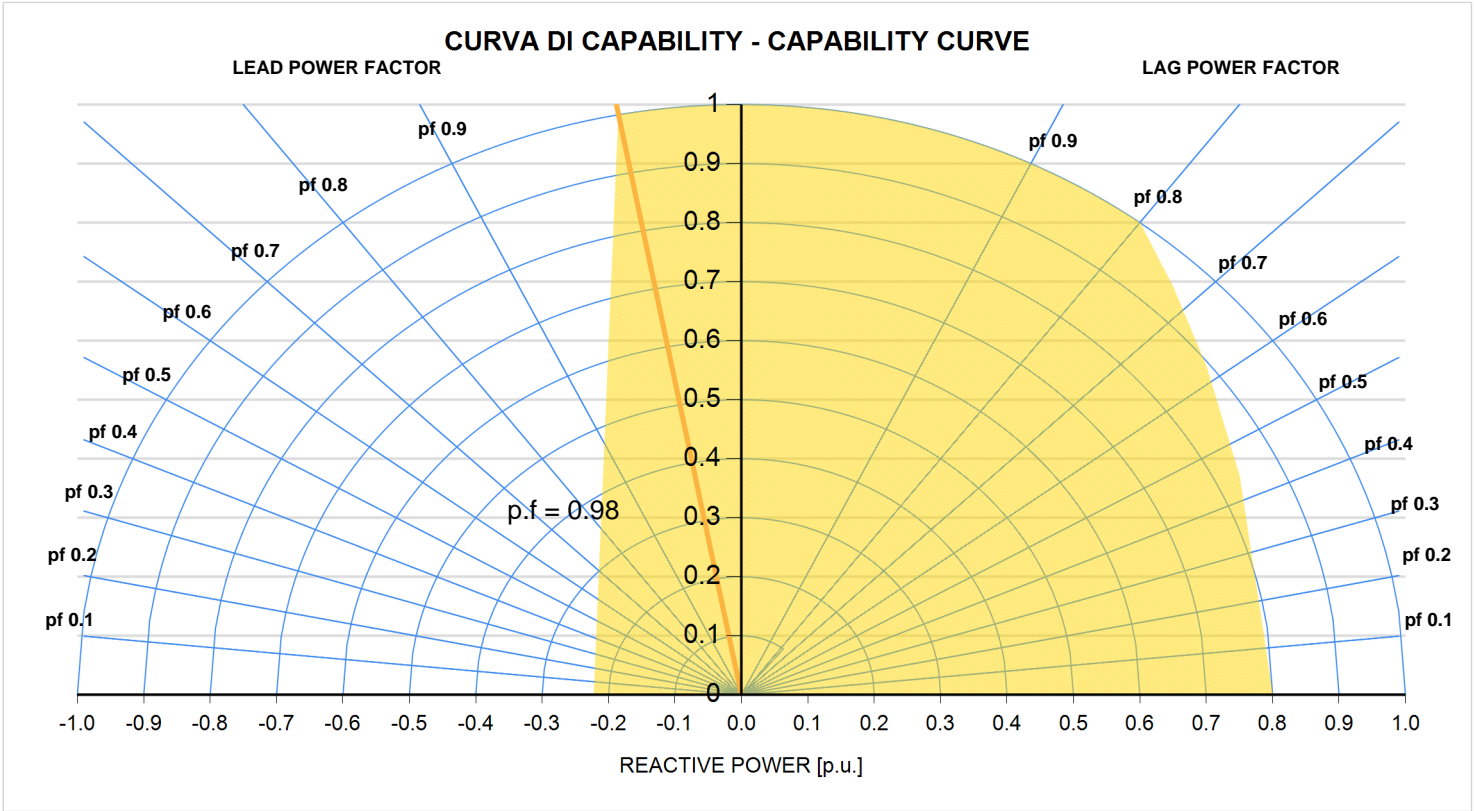
MJB 200 MA4

Project: _____
Reference: _____



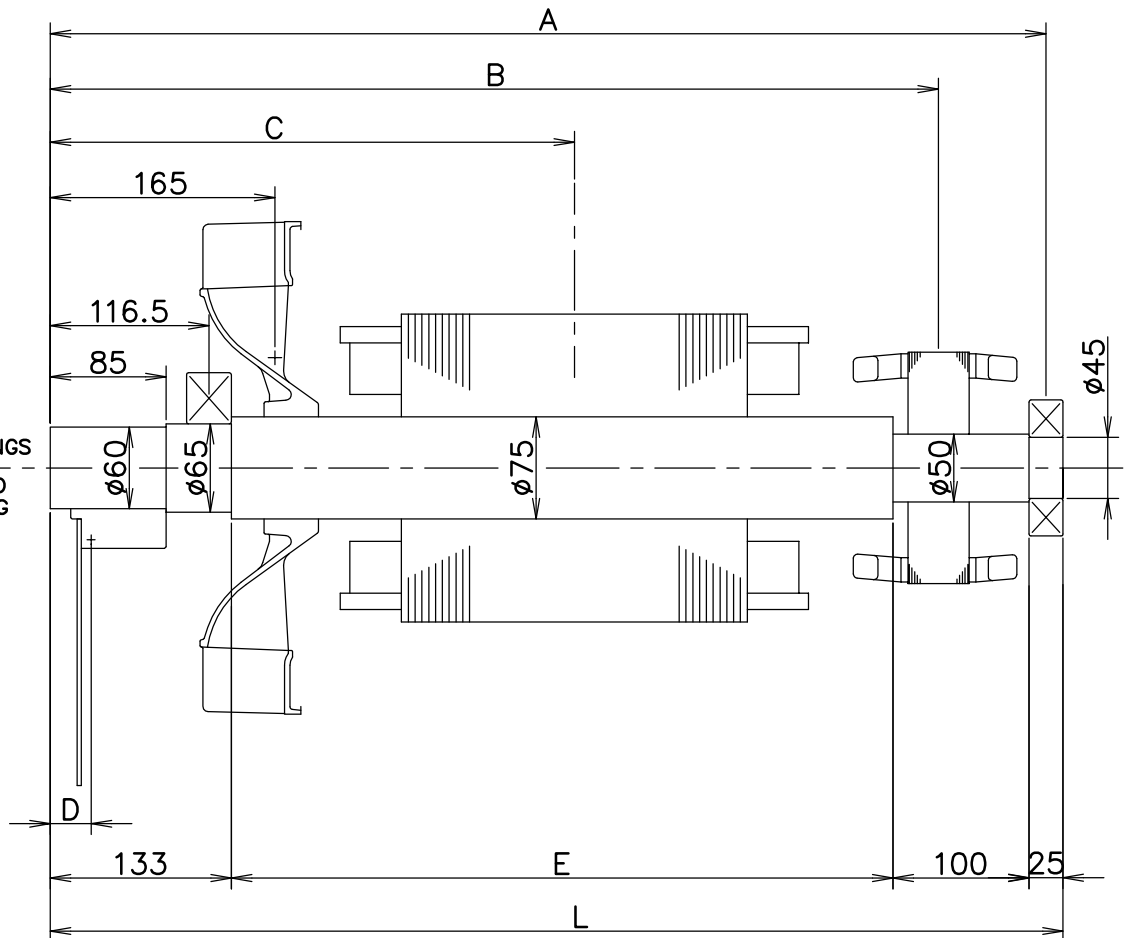
MJB 200 MA4

Project: _____
Reference: _____



ELEMENTI PER VERIFICHE TORSIONALI
TORSIONAL ANALYSIS DATA

DIMENSIONI IN mm
DIMENSIONS IN mm



GIUNTO COUPLING	D	kg	J kgm ²
SAE 8	66	5.3	0,0186
SAE 10	65	5.8	0,0305
SAE 11 1/2	66	6.4	0,0440
SAE 14	66	8.1	0,1083

1) PER L'ESECUZIONE MONOSUPPORTO
AGGIUNGERE I VALORI DEL GIUNTO PRESCELTO
 $4J=PD^2$

1) FOR SINGLE BEARING BUILD
ADD THE VALUES OF SELECTED COUPLING
 $4J=PD^2$

TIPO TYPE	DIMENSIONI IN mm DIMENSIONS IN mm					VENTOLA FAN		ALBERO SHAFT		RUOTA POLARE MAIN CORE		ROTORE ECC. EXCITER CORE		TOTALE (1) TOTAL (1)			
	A	B	C	E	L	kg	kgm ²	kg	kgm ²	kg	kgm ²	kg	kgm ²	kg	kgm ²		
SA4	636.5	547.5	327.5	391	649	2.1	0.032	18.5	0.0113	57.5	0.179	7.5	0.0526	85.6	0.2749		
MJB SB4			337.5							60	0.2050			88.1	0.3008		
200 MA4	731.5	642.5	360	486	744					21.5	0.0137			75	0.2630	106.1	0.3613
MB4			385											86	0.3276	117.1	0.4259



GENERATORI MJB 200
GENERATORS N°4 POLI
N°4 POLES

M00AVB83AW

DATA	29.02.12
FIRMA	BALESTRO
DIS.	
CONTR./C.UFF.	
CONTR./NOR.	

CONT.NOR.	
CONT./C.UFF.	
Data	
Firma	
Modifiche	
Indice	

CONT.NOR.	
CONT./C.UFF.	
Data	
Firma	
Modifiche	
Indice	